

# DCM BREEZE WINNOWER™ Mini Cracker-Winnower User Manual

---

Diamond Custom Machines Corporation  
9 Ilene Ct, Unit 9  
Hillsborough, NJ 08844  
USA  
USA phone: +1 888-717-9222  
International phone: +1 908-301-4704  
Email: [support@melangers.com](mailto:support@melangers.com)



## TABLE OF CONTENTS

1.	DCM BREEZE WINNOWER™ MINI OVERVIEW	2
	System Features	2
	Technical Specifications and Dimensions	2
2.	PARTS DIAGRAM	3
3.	SAFETY INSTRUCTIONS AND PRECAUTIONS	3
	General Safety	4
	Electrical Safety	4
	Precautions	4
4.	DCM BREEZE WINNOWER™ MINI COMPONENT LIST	5
5.	INSTALLATION & ASSEMBLY DIAGRAM	6
	Written Instruction	7
6.	STARTUP & FIRST-USE CLEANING	7
7.	COCOA BEAN CRACKING & WINNOWING SET UP AND OPERATION	7
8.	FUNCTIONS & ERROR CODES	8
9.	TROUBLESHOOTING & FAQ	9
10.	TECHNICAL SPECIFICATIONS	9
11.	SERVICE, MAINTENANCE & REPAIRS	10
12.	WARRANTY INFORMATION	10-11

*NOTE: Due to continuous product improvement, design changes are made from time to time. Some changes and modifications may not be covered in this manual. If you are unsure about the safe operation of your DCM BREEZE WINNOWER™ Mini, please contact Diamond Custom Machines Corporation for assistance.*



## 1. DCM BREEZE WINNOWER™ MINI OVERVIEW

DCM BREEZE WINNOWER™ MINI is a next-generation cracker-winnower designed in the USA. It is made to crack and winnow raw and roasted cocoa beans. This sturdy and compact machine streamlines the process of cracking and winnowing beans of all sizes, saving makers size-sorting time and money.

### System Features

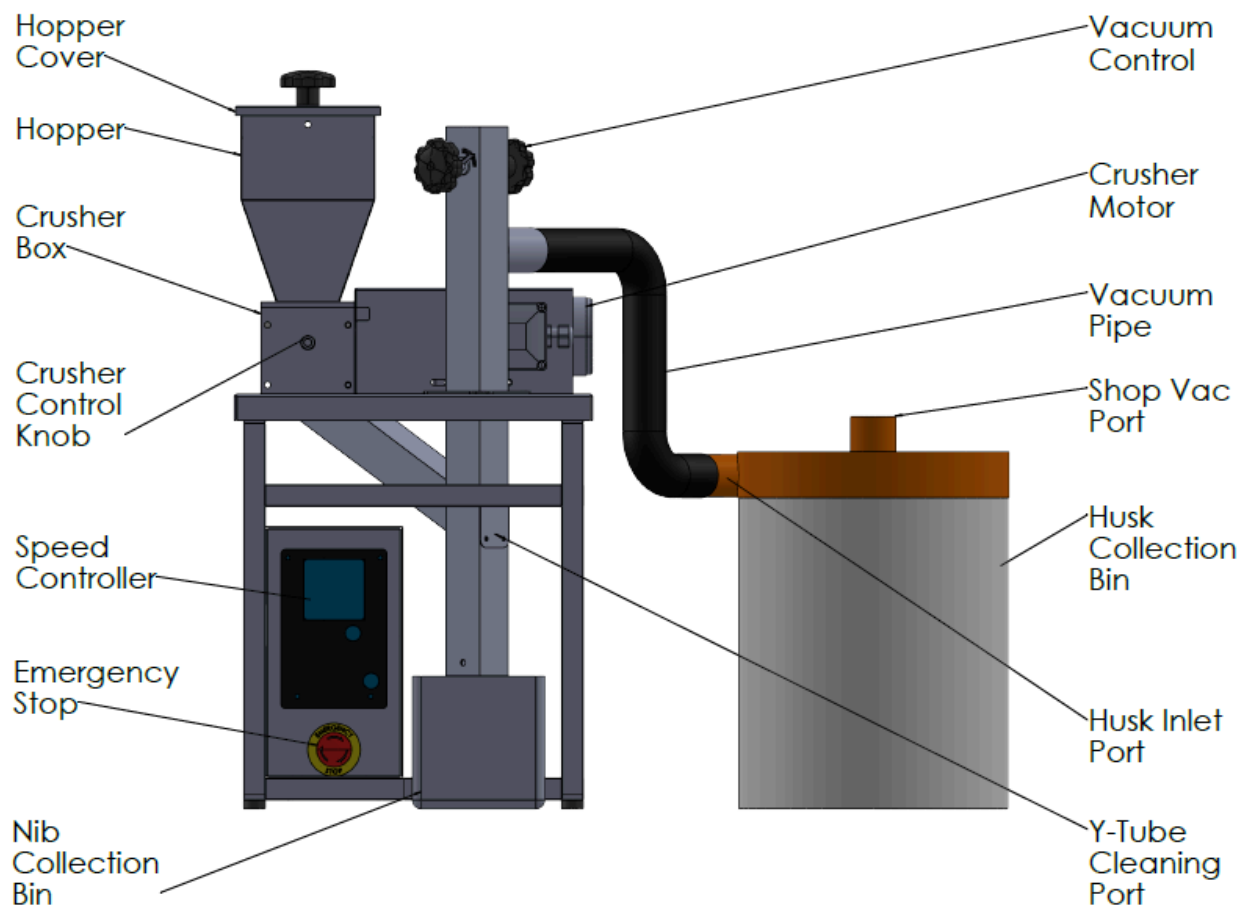
- Innovative cracker can be adjusted to accommodate any bean size without pre-sorting beans for size
- Purpose-built variable speed, high torque motor
- Adjustable vacuum control for better husk separation
- Sturdy, stainless steel frame for reliability and years of performance
- Easy to transport due to a manageable size and weight
- Designed and made in the USA
- Spare parts are stocked for short lead times
- 1-year Limited Manufacturer's Warranty

### Technical Specifications and Dimensions

- Voltage: 110v or 220V
- Current: 2A or 1A
- Machine weight: 85 lbs/38 kgs approx
- Unit dimensions: 16x16x32" (assembled)
- Production Yield: 10 to 15 kgs an hour
- Vacuum: The customer must provide a 1.5 to 2 H.P. Vacuum VAC. A small Miele Canister vacuum works best. (Classic C1 Model)



## 2. PARTS DIAGRAM



*\*Nib Collection Bin not provided with the unit*

## 3. SAFETY INSTRUCTIONS AND PRECAUTIONS

Generally accepted and recommended safety practices apply to appliances purchased from Diamond Custom Machines Corporation.

Users are required to read and understand operating instructions, labels and general safety and warnings prior to using the appliance. Save these instructions for future reference.

Failure to follow the instructions detailed in this manual may lead to a voided warranty, personal harm, damage to the appliance, fire hazard, or other unsafe and potentially dangerous conditions.

### A. General Safety

- a. Do not use the appliance for anything other than its intended use. Do not use outdoors; this product is intended for indoor use only. Do not place the appliance near a hot gas or electric furnace.



- b. Place the unit on a hard, flat, level, and stable surface.
- c. For your safety, use proper lifting procedures to avoid personal injury. During disassembly for transport or maintenance, exercise extra care especially when handling heavy components. Handle sharp edges carefully.
- d. The DCM Breeze Winnower™ Mini is designed for continuous operation. Please refer to your vacuum manufacturer's recommendations for guidelines on continuous usage.
- e. Never leave the unit unattended while operating. Close supervision is always necessary when the appliance is used near children or persons not trained to use the machine.
- f. Loose clothing and long hair must be secured prior to operation.
- g. Do not use any accessory attachments that are not recommended by Diamond Custom Machines Corporation. This may cause personal injuries and/or damage to the unit.
- h. NEVER, under any circumstance, should operators reach into the machine with hands or tools, while in operation.

## **B. Electrical Safety**

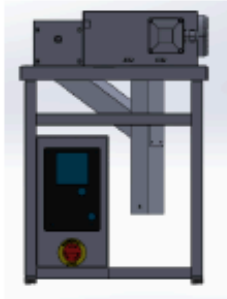
- a. Use this product with a non-GFCI rated voltage AC outlet only. Use a dedicated electrical outlet/circuit for the unit.
- b. To protect against electric shock, do not immerse the power cord, power plug or the machine in water or in any other liquid.
- c. Always switch off the unit and unplug the cord when the machine is not in use.
- d. Do not operate the appliance with a damaged cord or plug.
- e. If the appliance has malfunctioned or has been damaged in any way, contact our Technical Support Team for help.
- f. Disconnect the unit prior to cleaning or when not in use.
- g. Periodically check the power cord for any visible damages.
- h. Do not allow the power cord to touch hot surfaces.
- i. Do not allow the power cord to hang loose.
- j. Do not remove the unit's protective coverings

## **C. Precautions**

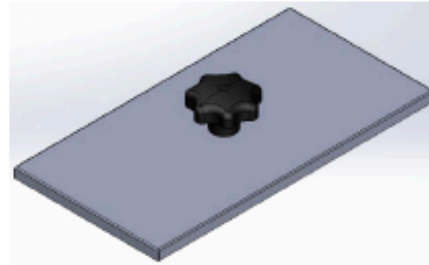
- a. Always Plug the DCM BREEZE WINNOWER™ MINI into an appropriate motor-rated outlet.
- b. Never handle the plug with wet hands.
- c. Ensure that the electrical outlet is properly grounded.



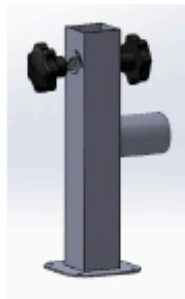
#### 4. DCM BREEZE WINNOWER™ MINI COMPONENT LIST



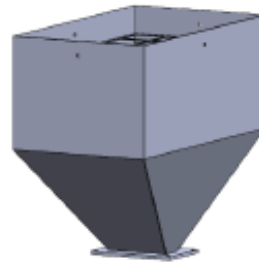
**Base – Qty. 1**



**Hopper Cover – Qty. 1**



**Vacuum Tower – Qty. 1**



**Hopper – Qty. 1**



**Bucket – Qty. 1**



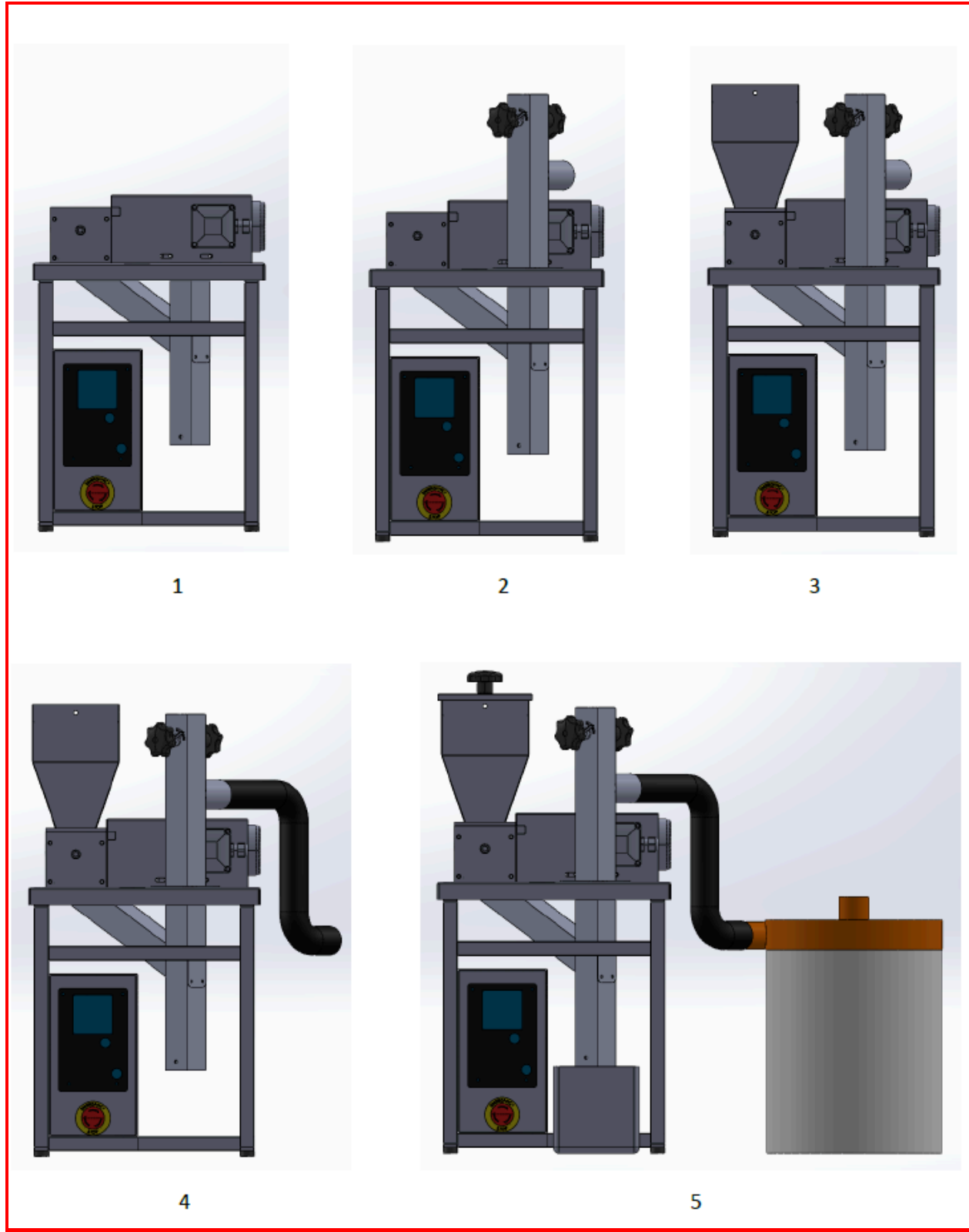
**Husk Separator and Tube – Qty. 1**



**Tool Bag – Qty. 1**



### 5. INSTALLATION AND ASSEMBLY DIAGRAM





## A. Installation and Assembly

- a. Ensure that the DCM BREEZE WINNOWER™ MINI has arrived safely without any damage during transit. Inspect the unit for any visual defects. If you see any defects, please contact us via phone or email.
- b. Select a work area that is well-ventilated and provides adequate space for the DCM BREEZE WINNOWER™ MINI. The vacuum and collection bins can sit on the floor.
- c. Install the Hopper by matching the sides.
- d. Install the vacuum pipe by securing the pipe.

## 6. START-UP AND FIRST USE CLEANING

- a. Wipe clean the outside of the machine using a soft, lint-free cloth.
- b. Vacuum any dust residue present inside the unit.

## 7. COCOA BEAN CRACKING AND WINNOWING SETUP AND OPERATION

- a. Be sure that your cocoa beans are cold or at room temperature for optimal performance. It is good practice to allow at least one day between roasting and Winnowing. Warm beans are soft, and do not offer efficient cracking for good nib-shell separation.
- b. Check that the Emergency Stop has been disengaged. Turn Clockwise to disengage.
- c. Adjust the cracker plate so that there is full contact with the rotating cutter. Then back out two full rotations and tighten the locking nut to lock the cracking nut in place. This is the starting set point for the cracking system.
- d. After the unit is fully hooked up, turn on the speed controller. Set the speed between 20 and 30. We recommend setting the speed between 20 and 30 for optimal performance.
- e. Turn on the vacuum.
- f. Set the gap on the vacuum control to approximately 1/2" open and lock in place.
- g. Take 25-50g of beans and drop them in the hopper. .
- h. Look through your nib bin and see if there are any uncracked beans. If so, then stop the machine and then tighten the cracker plate by 1/8 to 1/4 turn. Then, repeat the process until you do not see any uncracked beans in the nib bin.
- i. Open the husk bin and see if there are any nibs present. If nibs are present, adjust the vacuum control accordingly: if the vacuum pressure is high, nibs will be sucked into the husk bin. Vacuum pressure can be reduced by opening up the vacuum control valve.
- j. If husks are present in the nib bin, the vacuum pressure needs to be increased by closing the vacuum control valve slightly.
- k. Repeat steps i and j until you reach a point that there are no nibs in the husk bin and no husks in the nib bin. Once this is achieved, lock the nuts on the vacuum control valve tightly and the lock nuts in the cracker plate screws so the settings do not change during operation.
- l. At this point, you can fill the hopper and start cracking and winnowing the beans.
- m. The hopper can hold up to 2.5 kg of cocoa beans. Ensure that you have an adequately-sized nib bin to collect the clean cocoa nibs.



## 8. FUNCTIONS AND ERROR

This only applies when you have a digital Speed control Module.

TABLE 7 – DIGITAL ERROR CODES

Display	Description	Display	Description
StoP	<b>Drive Stopped</b> – Indicates that the drive is in the Stop Mode. Function No. 4.03 set to “0001”.	End	<b>Parameter Changed</b> – Momentarily flashes. Indicates that a parameter has been successfully changed.
8.01	<b>Function No. Example</b> – A Function No. consists of a Group No. (digits on the left side of the decimal point) and a Group Code No. (digits on the right side of the decimal point).	-.A	<b>Motor Current Display</b> – When the display is set to show Motor Current, the format will be “XX.XA”. Function No. 4.04 set to “0001”.
-.U	<b>Motor Voltage Display</b> – When the display is set to show Motor Voltage, the format will be “XXU”. Function No. 4.05 set to “0001”.	-.U	<b>Bus Voltage Display</b> – When the display is set to show Bus Voltage, the format will be “XXU”. Function No. 4.06 set to “0001”.
-LU-	<b>Low Voltage Trip</b> – Indicates that the AC line input voltage is below the Undervoltage Trip Point specified in Table 2, on page 9.	LU-r	<b>Low Voltage Recovery</b> – Indicates that a Low Voltage Trip occurred and the AC line input voltage has returned to within the operating range specified in Table 2, on page 9.
-OU-	<b>Overvoltage Trip</b> – Indicates that the AC line input voltage is above the Overvoltage Trip Point specified in Table 2, on page 9.	OU-r	<b>Overvoltage Recovery</b> – Indicates that an Overvoltage Trip occurred and the AC line input voltage has returned to within the operating range specified in Table 2, on page 9.
OL-t	<b>Overload Trip (I<sup>2</sup>t Timeout)</b> – Indicates that the motor has been overloaded for an extended period of time.	EF-t	<b>External Fault Trip</b> – Indicates that an external fault has occurred at one of the MFI's of the IODA. Function Nos. 7.00 – 7.06 set to “0008”.
CS-t	<b>Current Source Trip</b> – Indicates that the current signal output (from the IODA) has been opened.	-SC-	<b>Short Circuit Fault</b> – Indicates that the drive detected a short circuit at the motor (phase-to-phase).
-PL-	<b>AC Line Phase Loss Detection</b> – Indicates that the drive has detected a loss of one of the phases in the 3-phase AC line input applied to Models KBDA-29*, 45, 48.	Err1	<b>Data Enter Error</b> – Indicates that the drive is in the Program Mode and a non-valid parameter change has been attempted.
Err2	<b>Keypad Communication Error</b> – Indicates that the keypad failed to initialize when the drive is powered up. This is an abnormal condition – contact our Sales Department.	Err3	<b>Flash Memory Error</b> – Indicates that a flash memory error on the drive has occurred. This is an abnormal condition – contact our Sales Department.
Err4	<b>IODA Error</b> – Indicates that the drive has lost communication with the IODA.		



## 9. TROUBLESHOOTING and FAQs

1. If the crusher plate is too close to the feeding wheel and the beans are too warm, cocoa butter will build up between the plate and the wheel, stopping the flow of nibs. To fix this, stop the machine and remove the power cord from the outlet. Then remove the hopper, clean the crusher plate and feeding wheel with a wire brush, and vacuum out any debris.
2. Do not run the machine with warm cocoa beans. Cold cocoa beans allow for higher efficiency.
3. Keep the cracker plate set to the largest nib size. The larger the nib size, the greater the efficiency of the machine. This will also reduce the amount of dust produced, which will preserve cocoa butter in the nibs.

## 10. TECHNICAL SPECIFICATIONS

Model Name	DCM Breeze Winnower™ Mini Cracker-Winnower
Outer Body Assembly	Stainless Steel
Power Requirements	100-120 VAC or 208-230VAC, 1 phase 50/60 Hz, 2 A
Overall Dimension	Approx 16"x 16"x32"
Weight	Approx 85 lbs/38 kg
Motor	1/12 HP, 3-phase motor
Cable Length	8 feet
Standard Capacity	2.5kg/5 lbs



## 11. SERVICE, MAINTENANCE and REPAIRS

For optimal performance, we recommend the following servicing:

While Unit is in use: Empty the husk bin as it fills up to avoid overflowing.

Daily: Check the vacuum hose every time you use the machine to be sure the connection is strong. A weak connection can result in too much husk in your winnowed product.

Weekly: Clean the shop vac to remove any dust build up.

Monthly: Remove the hopper, vacuum out the crusher box, and vacuum up any debris. Check the cutting edges to be sure they are clean and sharp. Use a wire brush to remove any debris.

*If direct support or replacement parts are needed, contact us via phone or email.*

## 12. WARRANTY INFORMATION

### 1-year Limited Warranty

Diamond Custom Machines Corporation (DCM) warrants that for a period of one year from the date of purchase, this product will be free from defects in material and workmanship. DCM, at its option, will repair or replace this product or any component of the product found to be defective during the warranty period. Replacement will be made with a new or remanufactured product or component. If the product is no longer available, a replacement may be made with a similar product of equal or greater value. This is your exclusive warranty. Do NOT attempt to repair or adjust any electrical or mechanical functions on this product. Doing so will void this warranty. This warranty is valid for the original purchaser from the date of initial purchase and is not transferable. Keep the original sales receipt. Proof of purchase is required to obtain warranty performance. DCM dealers, service centers, or retail stores selling DCM products do not have the right to alter, modify or in any way change the terms and conditions of this warranty.

This warranty does not cover normal wear of parts or damage resulting from any of the following: negligent use or misuse of the product, use on improper voltage or current, use contrary to the operating instructions, disassembly, repair or alteration by anyone other than DCM authorized service center. Furthermore, the warranty does not cover: Acts of God, such as fire, flood, hurricanes and tornadoes.



### What are the limits of DCM's liability?

DCM shall not be liable for any incidental or consequential damages caused by the breach of any express, implied or statutory warranty or condition.

Except to the extent prohibited by any applicable law, any implied warranty or condition of merchantability or fitness for a particular purpose is limited in duration to the duration of the above warranty.

DCM disclaims all other warranties, conditions or representation, express, implied, statutory or otherwise. DCM shall not be liable for any damages of any kind resulting from the purchase, use or misuse of, or inability to use the product, including incidental, special, consequential or similar damages or loss of profits, or for any breach of contract, fundamental or otherwise, or for any claim brought against the purchaser by any other party.

### Obtain Warranty Service

If you have any questions regarding this warranty or would like to obtain warranty service, please contact us at:

Diamond Custom Machines Corporation  
9 Ilene Ct, Unit 9  
Hillsborough, NJ 08844, USA

Direct: Toll Free USA +1-888-717-9222, +1-908-301-4704

Fax: +1-732-289-6230

Email: [support@melangers.com](mailto:support@melangers.com)